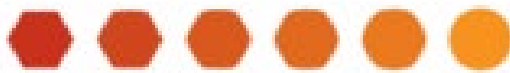




Friedrich-Alexander-Universität
Erlangen-Nürnberg



map advanced materials
and processes

**Study Guide for the our Master's Program
"Advanced Materials and Processes" (MAP)**

<https://www.map.tf.fau.de/>

All information in this study guide has been carefully checked. Nevertheless, no guarantee can be given for the correctness of the information. The legally binding, currently valid versions of the regulations and guidelines are available for inspection at the responsible offices, e.g. at the examination office. Please also note the transitional regulations that may apply.

Preface

We would like to welcome you and are pleased that you will start your studies at the Master's Program „Advanced Materials and Processes“ at the Friedrich-Alexander-University Erlangen-Nürnberg.

In order to make it easier for you to start your studies, we are providing you with this study guide. We hope that it will be of help to you to find your way around.

Especially at the beginning of your studies, many questions arise, both in terms of content and organization. The transition from a Bachelor's degree to a Master's degree, especially if you change universities or even countries, presents new challenges for you as a new student, which we are happy to help you overcome.

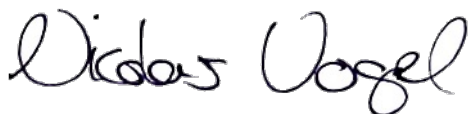
This study guide is intended for Master's students who have enrolled in MAP in the academic year 2024/25. It contains important and useful information, which is necessary for the beginning and the further of your studies. In addition, it offers new students comprehensive assistance, for example, in creating your first timetable and finding your way around the Departments. Of course, we are aware that a study guide alone cannot answer everything you want to know. If you have specific questions or need further information about your studies, please do not hesitate to make use of our diverse and comprehensive counseling and information services. Details on the various offers can be found in this study guide.

We would like to thank all those who participated actively in the preparation of the study guide.

We would also like to express our special thanks to the MAP graduates for their helpful and interesting answers to our questions, which you can read in the first section of the study guide. Any feedback on this study guide would be appreciated.

Erlangen, in May of 2024

Prof Nicolas Vogel
(First Chair)



Prof Peter Felfer
(Second Chair)



Content

1. MAP Alumni introduce themselves.....	6
1.1 Our questions for Dr. Mariana Cecilio de Oliveira Monteiro.....	6
1.2 Our questions for Mani Diba.....	7
1.3 Our questions for Dr. Nadja Kölpin.....	8
1.4 Our questions for Sandra Saad.....	9
2. MAP Team - Organization and Responsibilities.....	10
2.1 Academic Support.....	10
2.2 Administrative and Pastoral Support.....	10
2.3 Map of the Faculty.....	11
3. Prior to your studies.....	12
3.1 Checklist – What to do before starting your studies.....	12
3.2 Being an international student in Germany.....	13
3.2.1 Cost of Living and studying.....	13
3.2.2 Application and enrollment.....	15
3.2.3 Finding accommodation.....	16
3.2.4 Medical care & insurance.....	17
3.2.5 Banking.....	18
3.2.6 German visa.....	18
3.2.7 Working.....	19
3.2.8 Transportation.....	19
3.2.9 Welcome Weeks.....	19
3.2.10 German language Course.....	20
3.2.11 English Courses.....	21
3.3 Introductory Courses.....	22
3.3.1 Precourse Linux and Python.....	22
3.3.2 Introduction to Advanced Maths and Calculus.....	22
3.3.3 Bio Introductory Course.....	Fehler! Textmarke nicht definiert.
4. MAP Structure.....	23
4.1 Fundamentals.....	23
4.2 Basics.....	23
4.3 Focal Subjects.....	24
4.4 Mini-Project.....	25
4.5 Scientific Skills.....	26
4.5.1 Scientific Skills I: Labcourse.....	26
4.5.2 Scientific Skills II: Literature Review.....	26

4.6 Additional Qualifications	27
4.7 Master's thesis	27
5. Also good to know	29
5.1. Re-registration.....	29
5.2 Leave of absence	30
6. E-study- electronic information on study	31
6.1 MAP Homepage.....	31
6.2 IdM	31
6.3 StudOn.....	31
6.4 campo	32
6.5 Literature research and e-books	32
7. Useful information for first-year students	33
7.1 Library.....	33
7.1.1 Technical and scientific branch library.....	33
7.2 Print Center	34
7.3 Available study rooms for group works, projects, etc.	35
7.4 Scholarships.....	35
8. Locations.....	36
8.1 Maps – important institutions.....	36
8.2 Who to turn to for specific advice?	38
8.3 Other useful addresses.....	40
8.4 Leisure and Living	41
8.5 The 29-euro ticket	42
9. Attachments	43
9.1 Examination regulations.....	43
9.2 Examination periods at the Faculty of Engineering until 2024 Fehler! Textmarke nicht definiert.	
9.3 WiFi and VPN.....	45
9.4 ZUV regulations	45
9.4.1 Master students who cannot prove their requirements within the one-year period	45
9.4.2 International students who need a letter from the university about proper studies / expected end of studies to extend their residence permit	45

1. MAP Alumni introduce themselves

1.1 Our questions for Dr. Mariana Cecilio de Oliveira Monteiro



What was your professional career like after MAP? What do you do now?

I have followed the “academia” path. Directly after graduating from MAP in 2017, I started a PhD in Electrochemistry at Leiden University in The Netherlands, from which I graduated *cum laude* (top 5%) in 2022. I then moved to the Fritz Haber Institute of The Max Planck Society in Berlin, to work as a postdoc at the Interface Science Department. After short nine months, I was awarded a Minerva Fast-Track Fellowship by the Max Planck Society and since January 2023 I am leading my own research group on “[Electrode-Electrolyte Interfaces](#)”. Me and my team study how different aspects of the electrode-electrolyte interface impact the performance of non-noble, multicomponent, earth-abundant catalysts for reactions relevant to our society’s energy transition – as the production of green H₂ in water electrolyzers and the reduction of O₂ in fuel cells.

Are you working in or close to the field of your focal subjects?

Not really. Nowadays I work with fundamental electrocatalysis, a topic that in my program was not covered. Still, especially the concepts of catalysis I learned in the “Advanced Process” focal and materials synthesis/stability in the “Nanomaterials and Nanotechnology” focal did help a lot, creating a strong background.

The internship in a company or an external research group is optional for us. Would you recommend it?

I highly recommend it. I had a lot of experiences in research before starting my PhD, but never in a company. Close to the end of my doctorate I still didn’t know if I wanted to stay in academia or not. I only knew, after doing a 3 months internship in the R&D of a company. In fact, it took me only a few weeks working in the company to realize I was more suitable for academia, and also liked the work more. Therefore, I strongly encourage trying both, to take career steps and decisions based on your own experiences and preferences.

What advice would you give to current first-year students?

My main advice is to do as much as possible within and outside the curriculum during the Masters. I know MAP is a competitive and tough program, but it is worth it doing all the soft skill courses offered, workshops, and most importantly: HiWi’s. Especially for those who think they might want to follow a career in academia: do a few HiWi’s in different research groups. No matter what the daily tasks are, at this point any experience is valuable, will make your CV more competitive and make you more creative. It will put you in contact with different topics, people, and surely open doors in the future. I did four different HiWi’s while I was a MAP student: in Biomat and LKO (WW), and in CTR and EVT (CBI).

1.2 Our questions for Mani Diba

What was your professional career like after MAP? What do you do now?

I continued an international and interdisciplinary scientific career after MAP. After graduating, I moved to the Netherlands for a PhD on self-healing biomaterials at Radboud University Medical Center. Then, I pursued postdoctoral research in the Netherlands at Eindhoven University of Technology, and in the USA at Rice University and Harvard University. Since April 2022, I have been



an Assistant Professor at Radboud University Medical Center in the Netherlands, where I lead my research group, Diba Lab (www.dibalab.org). Our focus is developing innovative biomedical solutions through biomaterial design and biofabrication strategies.

Why did you choose MAP at that time?

I was looking for international MSc programs in the EU which would be interdisciplinary while having a strong materials science core. My particular interest was biomaterials and nanomaterials, which were among the focal subjects that MAP offered. The Institute of Biomaterials, newly established at the time and led by Prof. Aldo Boccaccini, was indeed also a key motivation for me for wanting to join MAP.

How did MAP prepare you for your current job?

MAP provided me with an invaluable scientific foundation that I have been benefitting from ever since. The research experience I gained during MAP really facilitated my PhD research, which I could complete with the highest distinction. With the support I received from MAP professors, I was not only able to learn scientific thinking, but also how to perform scientific research and to disseminate scientific findings in conferences and as peer-reviewed scientific articles. MAP even offered me the opportunity to carry out my MSc thesis project partly at Imperial College London as an Erasmus Exchange Student, which expanded my scientific and international experience. The international environment of MAP instilled an international mindset in me which is an intrinsic requirement for performing scientific research at the global level.

Do you think being a MAP graduate gave you more career prospects compared to the regular Master graduate? If yes, which ones?

Certainly; MAP offers a unique opportunity to engage in scientific research at a level that is different from regular MSc programs. A clear example of these opportunities is mini-projects and the full semester MSc thesis. These opportunities enabled me to acquire a PhD position in an exciting research field, multiple postdoctoral fellowships, and ultimately my current faculty position leading an independent research group.

1.3 Our questions for Dr. Nadja Kölpin

What was your professional career like after MAP? What do you do now?

After MAP I did my PhD at University Erlangen-Nuremberg in the field of printed electronics at the Chair of Glass and Ceramics.

I moved on to Bosch Bamberg, first as an expert for exhaust gas sensors, later on as project lead.

Nowadays I am employed at DESY as industry relations manager. My task is to establish and maintain networks between industrial partners and our scientists and support in the initiation of cooperation projects as well as services. Furthermore, during conferences and other public events I often present and represent DESY and our opportunities and benefits especially for industrial clients.



Why did you choose MAP at that time?

I was in the second class to complete the program. It was very attractive to me due to the combination of topics from materials science and chemical engineering.

How did MAP prepare you for your current job?

MAP is a perfect possibility to get in touch with students from other countries and thus other cultures. This strengthens your ability to change your point of view. Furthermore, MAP is simply a lot of work and the subjects are challenging. This strengthens your ability to dive into new technical topics, organize yourself and set priorities.

1.4 Our questions for Sandra Saad

What was your professional career like after MAP? What do you do now?

I completed an industrial PhD at Bosch specializing in simulation and machine learning, focusing on the modeling of the flow-induced crystallization of semi-crystalline polymers during the injection molding process. Throughout my research, I conducted FEM simulations and utilized the generated data to develop models representing this crystallization phenomena which were calibrated using experimental data. Currently, I work as a development engineer at Bosch and I am primarily involved in data science projects. My role entails utilizing production plant data or simulation data to create models that assist my department in solving problems



What are the most important skills you need as a young professional?

Good communication skills and being able to manage time well are very important for young professionals. When you can communicate clearly, it helps you work better with others, understand what needs to be done, and get along with people. Time management helps in organizing your tasks so you can finish them on time without feeling too stressed. It helps you stay on top of your work and get things done efficiently.

The internship in a company or an external research group is optional for us. Would you recommend it?

I would highly recommend an industrial internship. It offers invaluable real-world experience, expands your professional network, and increases your marketability to potential employers. Internships provide opportunities for personal and professional growth, helping you develop essential skills and prepare for future career roles.

As a foreigner working in Germany, do you think it is important to speak German well?

I do think that being able to speak German is important in most companies. Being able to speak German proficiently can greatly enhance your experience as a foreigner working in Germany. While many companies conduct technical work in English, fluency in German is invaluable for effective communication and integration within your team and the broader workplace culture. Participating in day-to-day conversations in German not only facilitates smoother collaboration with colleagues but also fosters a sense of belonging and inclusion. It allows you to better understand the nuances of workplace dynamics, cultural norms, and company protocols.

2. MAP Team - Organization and Responsibilities

2.1 Academic Support



Nicolas Vogel
Chair



Peter Felfer
Co-Chair



Tanja Franken
Advanced
Processes



Aldo Boccaccini
Biomater. &
Bioprocessing



Michael Engel
Comp. Mat. Sci.
& Proc. Simn



Mathias Göken
Nanomater. &
Nanotech.

The areas of responsibility of the Academic Support team are:

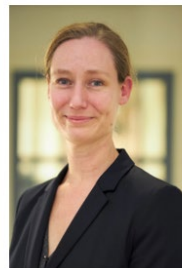
- Overall strategy & program structure
- Promotion of academic excellence, quality control
- Strategic collaborations, networking, external & internal communication
- Selection of lectures
- Selection of students
- Establish personalized curriculum
- Student counseling

2.2 Administrative and Pastoral Support

Dorothea Herget
Coordinator



Sandra Schindler
Coordinator



Anja Baier
Team Assistant



Lara Topcu
Student Assistant

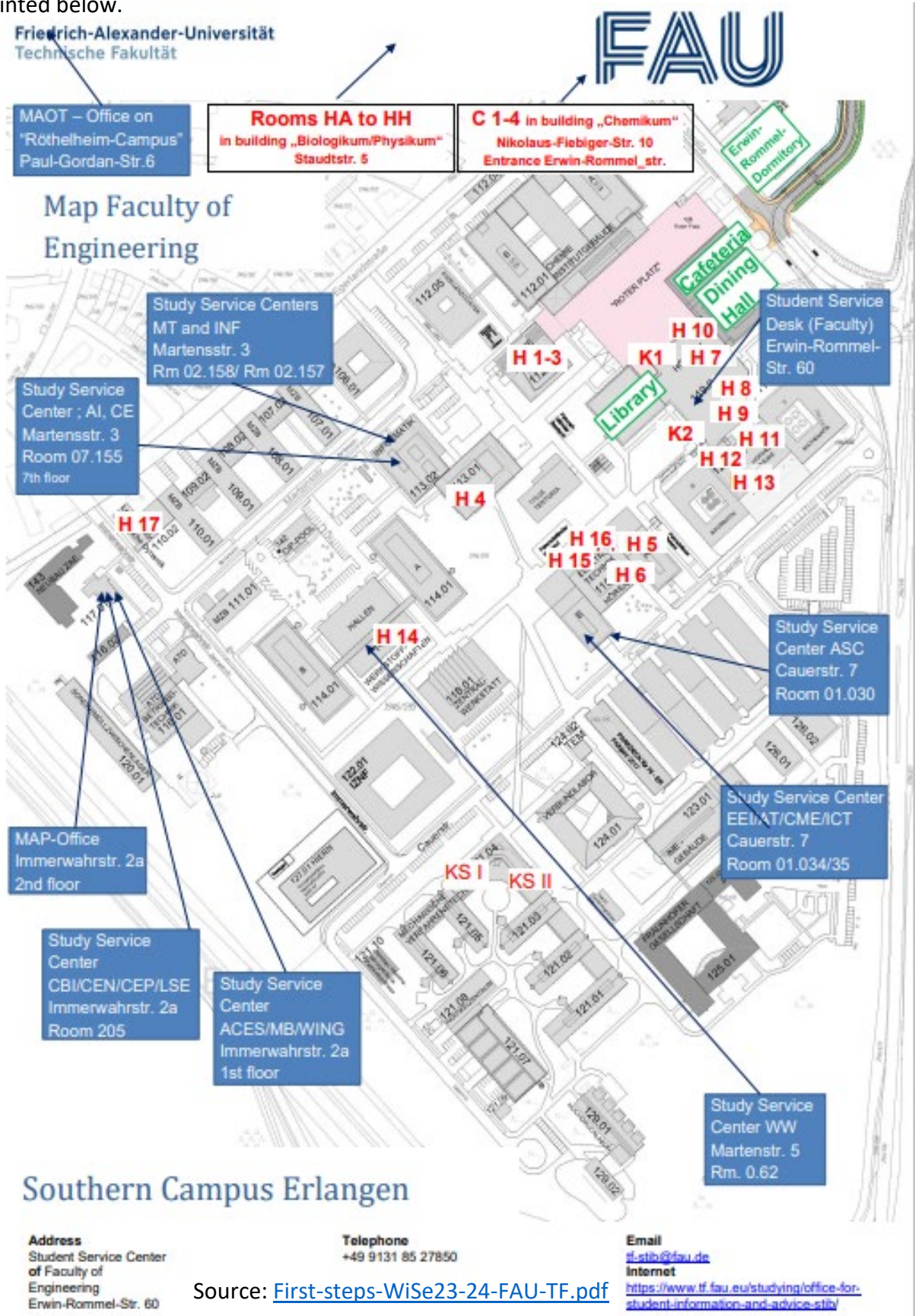


The areas of responsibility of the Academic Support team are:

- Timetabling of lectures, lab courses
- Soft skills program
- Maintaining StudOn pages
- Networking Events (MAP&ENB)
- Public relations & web page
- Organization of selection process
- Support before arrival
- Provision of pastoral support
- Welcome package: Info on living in Erlangen, administration, orientation events, leisure activities, health, insurance, shopping, transport etc.
- Buddy Program

2.3 Map of the Faculty

Most of the facilities for the Master's Program „Advanced Materials and Processes“ are located in the southern campus of the university. The locations relevant for the study are printed below.



3. Prior to your studies...

3.1 Checklist – What to do before starting your studies

- ✓ Watch DEGIS Network's videos on being an international student in Germany
- ✓ Look at FSI-Homepage
- ✓ IdM (user identification, FAUcard, E-Mail & Forwarding)
- ✓ Get to know campo and StudOn
- ✓ Read Module Guide on campo
- ✓ Create your timetable
- ✓ Set up Wi-Fi
- ✓ Read FAQs on the IT of MAP
- ✓ Download the 29-Euro ticket for public transport
- ✓ Use RRZE services
- ✓ OPACplus
- ✓ Validate FAUcard
- ✓ Install FAU-App
- ✓ Find examination office
- ✓ Read examination regulations and find GOP-courses
- ✓ Participate in the Buddy-Program
- ✓ Once you got accepted and have your StudOn Account: browse through the [student wiki](#) in the [MAP StudOn Section](#)

3.2 Being an international student in Germany

It can definitely be very challenging at times, when you've just moved to Germany as an international student and getting everything settled here. To guide you through this complicated process, there is a [video guide by DEGIS Network](#), that could help you coordinate your journey.

You can watch these short YouTube videos to see, how to best prepare your arrival in Erlangen:

- https://youtu.be/B_Yc7pOmLQQ Discoveries of international students: The Wondrous Ways of German student life.
- https://www.youtube.com/watch?v=B_Yc7pOmLQQ On Arrival – International students and trainees.
- <https://youtu.be/QKnU1SHi8Fk> Your Start @FAU.
- <https://youtu.be/O8BzTcNPiqk> How students live in Germany.
- <https://youtu.be/pFrTSlot-s0> How to get a scholarship in Germany.
- <https://youtu.be/DTpPs-OfPiY> The uni vlog. Introducing Erlangen.
- <https://youtu.be/9Atx748gONA> The uni vlog. Things that surprised me in Germany.

A few more [important and useful tips](#) can be found on the [FAU Website](#).

We expect you to arrive in Erlangen between 1 and 3 September 2024 at the latest. You will have to go through several steps to obtain your official registration and residence in Germany (residence permit, health insurance, bank account, etc.). Do not worry, we will help you with any problems you may encounter! Moreover, the Central Office for International Affairs and the Administration of the Faculty of Engineering offer introductory programs. A detailed schedule is to follow in due time. We suggest that you plan some time to get acquainted with the new environment and culture and to get to know the German way of life. Although we may have a reputation as serious people, you will find that most Germans are actually friendly, relaxed and helpful. Of course, you should also use the time to get to know your fellow students.

The regular lectures of our Master's Program will start on 14 October 2024.

3.2.1 Cost of Living and studying

Fixed costs each semester:

FAU does not have tuition fees. However, all students must pay a semester fee that must be transferred in order to remain enrolled at FAU for the following semester. For winter semester 2023/24, the fee comprised the contribution for Student Services of 67 euros.

General living costs:

The expenses that arise in the course of leading a normal life, i.e. for accommodation, food, clothing and recreational activities, are called living costs. They are about average in Germany compared to other European countries, that is to say they are significantly lower than in countries like Denmark, Luxembourg or Switzerland, but rather high compared to countries like Poland, the Czech Republic or Italy.

On average, a German student has expenses of 842€ per month. That includes rent, travel expenses, expenditures for food, clothing, learning materials, health insurance, telephone, Internet, radio and TV license fees, and recreational activities.

There are a number of discounts for students. If you can show valid student ID, you will often pay less for tickets to the theatre, museums, opera houses, cinemas and other cultural institutions.

More information on this can be found here: [Costs of education and living - DAAD](#)

3.2.2 Enrollment

Enrolment takes place according to the [guidelines of the Student Records Office](#). After receiving the notification of admission, you need to apply for the enrolment in a few simple steps again via campo, transfer your semester fees and submit all required documents via post. Please note the enrolment deadline and its expiry. After the deadline, you can no longer apply for enrolment. We would particularly like to point out that you should familiarize yourself with the [proof of statutory health insurance](#).

3.2.3 Finding accommodation

In addition to the new academic challenges they will encounter, finding suitable accommodation is another issue faced by new students before they start their degrees.

The cities of Erlangen, Fürth and Nuremberg offer a very good standard of living and accommodation can be difficult to find, especially at the beginning of the semester. We therefore recommend that all students start looking for accommodation in Erlangen, Fürth and Nürnberg as soon as possible.

If you are a little flexible and also look in the surrounding area, you will have a better chance of finding somewhere affordable to live. The region has an excellent public transport system, so you should not have any problems getting to your place of study.

FAU itself cannot assign you accommodation, but works very closely with Student Services Erlangen-Nürnberg. Your own initiative is required to find suitable accommodation.

Since the market for accommodation can be very overstretched at times, ensure that you start looking for accommodation early (also from abroad) and apply for several different places.

The German National Association for Student Affairs (Deutsche Studentenwerk) offers lots of information and tips on finding accommodation. In addition, we have put together a few tips for making your search for accommodation easier:

1. Start your search early – at least three months before you arrive in Erlangen
2. Take out private liability insurance
3. Inform the landlord immediately of any damage
4. Make sure you fulfil all the contract obligations (e.g. opening the windows regularly and heating properly to prevent mildew)
5. Keep to deadlines and time limits such as cancelling the contract, paying the rent, extending the rental contract by semester, etc.

In addition, you can receive two types of support from the [FAU Accomodation Service](#).

- General support: The accommodation service supports international newcomer students from abroad who will be enrolled in an English-taught international study program. If you need help with your housing search please register on their [database “Mobility Online”](#) after you received your admission letter.
- [Welcome packages](#): The packages (currently available for Erlangen as place of residence) are offered at a charge and are tailored to your specific needs, ranging from someone going with you to help sort out the most important formalities once you have arrived in Germany to the full service package including an apartment in premium student accommodation. Detailed information on the welcome packages can be ordered on the website of the [FAU Accomodation Service](#).

We recommend that you contact the FAU Accomodation Service as early as possible in order to secure their full support.

Please note that untrustworthy advertisements for accommodation is on the rise. [The FAU website](#) provides [important information](#).

3.2.4 Medical care & insurance

The German healthcare system is one of the best in Europe and is available to all residents.

Some European students can use their European Health Insurance Card as insurance, but if you're a non-EU student you'll need to apply for German health insurance, as a valid health insurance plan is a requirement for obtaining visa and for being admitted as a student. You can find more information on this here: [Health insurance | FAU Erlangen-Nürnberg](#).

Once you have your insurance plan, you'll be given a health card which you should take with you to any doctor's appointments or hospital visits.

The waiting times for doctors' appointments can also be quite long in Germany, so don't be surprised if sometimes you end up waiting 2-3 months!

Make sure to apply for health insurance as soon as you can if you need it. If you don't, you may face delays with your visa.

You can contact our campus consultant, Andreas Schaller, for health insurance related questions or consultation via this E-mail address: andreas.schaller@tk.de.

Students from other European countries are able to request their electronic registration directly via the mail ehic@tk.de. The following data is required for this:

- Picture of the front and back of the European health insurance card
- Name and address of the university (preferably the letter of admission)
- Date of the start of studies
- Optionally a telephone number for queries

3.2.5 Banking

It's essential to open up a German bank account as some scholarship and financial aid options may only transfer money into German bank accounts.

If you want to set up a student bank account in Germany, you can go to the bank branch of your choice and provide the following documents:

- Passport or ID
- Student ID/Certificate of Enrolment
- Confirmation of registration from the German Resident Registration Office

Once your bank account is opened you'll be issued with a debit card, but don't expect to be able to use it everywhere - a lot of small businesses and cafes in Germany only accept cash.

3.2.6 German visa

To come to Germany as a student, you must:

- be registered or have an invitation to register as a student in an educational institution or to attend language courses;
- obtain a student visa and
- be granted a residence permit.

You must apply to the embassy or consulate in your country of origin or permanent residence for a student visa.

Once in Germany, you must apply for a residence permit for the purpose of study. The residence permit is granted by your local Foreigners Authority.

You must provide:

- acceptance from the educational institution;
- sufficient financial resources to cover living and study expenses
- health insurance
- accommodation

Further information can be found here: [Germany - Student - European Commission \(europa.eu\)](https://ec.europa.eu/europa/european-commission/en/germany-student).

3.2.7 Working

If you get a job in Germany you will experience good salaries, an excellent work-life balance, and great opportunities.

There are also plenty of student job opportunities for those who speak English. You can look up open Job positions at the university on the [FAU Website](#). The documents required to work as a student assistant are

- document proving that you are a matriculated student ("Immatrikulationsbescheinigung")
- social security number (from health insurance)

Additionally, in our StudOn MAP section is regularly updated and will provide you with the most recent open positions for student jobs that are related to your studies.

3.2.8 Transportation

Transport in Germany is known for being highly efficient, clean and on time, plus it's fairly affordable - especially for students who can take public transport with their 29-euro ticket. More information can be found at "8.5 the 29-euro ticket".

The main transport options in Germany are:

- S-Bahn (Schnellbahn or Stadtschnellbahn)
- U-Bahn (Untergrundbahn)
- Buses
- Regional trains
- Regionalexpress (RE)

Our tip, however, is to get yourself a bike as most German cities, especially Erlangen are built with cyclists in mind. Most roads have designated cycle lanes so it's a very safe, fast, flexible and cheap way to get around.

If you have a car, you want to make sure you know the rules of the road in Germany - especially the Autobahn. On these highways, there's no speed limit and you can only stop in emergencies - it's even illegal to run out of fuel, so you can't use that as an excuse.

3.2.9 Welcome Weeks

Prior to the start of your studies, our Welcome Weeks will take place, where a variety of events is offered to help you get started.

From the beginning of September to mid-October, there are various information events on formal topics such as working student jobs, residence permits, health insurance, etc.

There are also fun activities such as scavenger hunts and guided library and city tours.

Further Information on the Welcome Weeks can be seen in a calendar we will send out in due time.

3.2.10 German language Course

For improving your German, stepping deeper into German culture and therefore increasing your chances for a future career, the German Language Intensive Course is offered. **From 11 September 2024 to 27 September 2024**, you can participate in the language course. More courses can be booked on the Website of the Sprachenzentrum.

This course will facilitate you in reaching GER A.1-level that is required by the Bavarian education law after your first year of studies. Please note that there are only a limited number of places available. Therefore, we strongly recommend that you register as soon as the registration is open. In order to register, please send the following documents to Ms Heidi Daumer-Hirschmann, sz-daf-fitkurs@fau.de:

- the completed application form as a .doc file (you may find more information at <https://sz.fau.eu/departement-german/courses-overview/fit-course/registration/>)
- a document confirming your connection to the Friedrich-Alexander-Universität Erlangen-Nürnberg (e.g. admission letter, acceptance letter)
- if applicable: certificate of previous language courses taken.

The participation fee is 370€. MAP students will receive a scholarship for this course upon arrival in Germany (please hand in your bank details at the time you live in Germany and have a German bank account), if they have the official admission of the Master's Office and have completely and successfully participated in the course.

For reimbursement of a German course, you can download the document illustrated in the following here: https://www.studon.fau.de/studon/goto.php?target=cat_4264947

3.2.11 English Courses

Depending on your pre-knowledge on English, it might be an option to attend specialized English courses at the Sprachenzentrum [Kursangebot – Sprachenzentrum der FAU](#). All English courses are free of charge for FAU students. Registration starts about 3 Weeks before the beginning of the lecture period. There are fitting courses for students who are interested in more subject-related English courses. We recommend the courses at level 3 or 4 at our Language Center (these correspond to C1 level).

3.3 Introductory Courses

To prepare for the contents of your studies, there will be multiple introductory courses:

3.3.1 Precourse Linux and Python

We are offering a two-day block course that provides essential skills for scientific research involving computers. The contents of this course are a prerequisite for the focal subject “Computational Materials Science and Process Simulation”. However, the course can also be of interest to those not planning to take this focal subject as computers are nowadays ubiquitous for data processing and analysis. The course is open to all students and there is no exam. We provide hands-on experience directly in front of computers and extensive opportunity for you to ask us any questions.

On the first day, we will get yourself comfortable with the command shell of Linux and teach you basic scripting knowledge.

On the second day, we will set the foundation for how to program with Python, including using Python to plot and analyze data.

The pre-course is aimed at those without any prior experience with Linux and Python. But you may want to participate even if you do have such experience to learn new skills and focus on more advanced knowledge during the two days. While there will be computers present in the CIP pool, you may bring your own laptop if they have a shell and Python available or you plan to install those during the two days.

3.3.2 Introduction to Advanced Maths and Calculus

We will also be offering an introductory course that provides essential skills in Advanced Maths and Calculus. The course is open to all students, is highly recommended and is offered during the first and second lecture week.

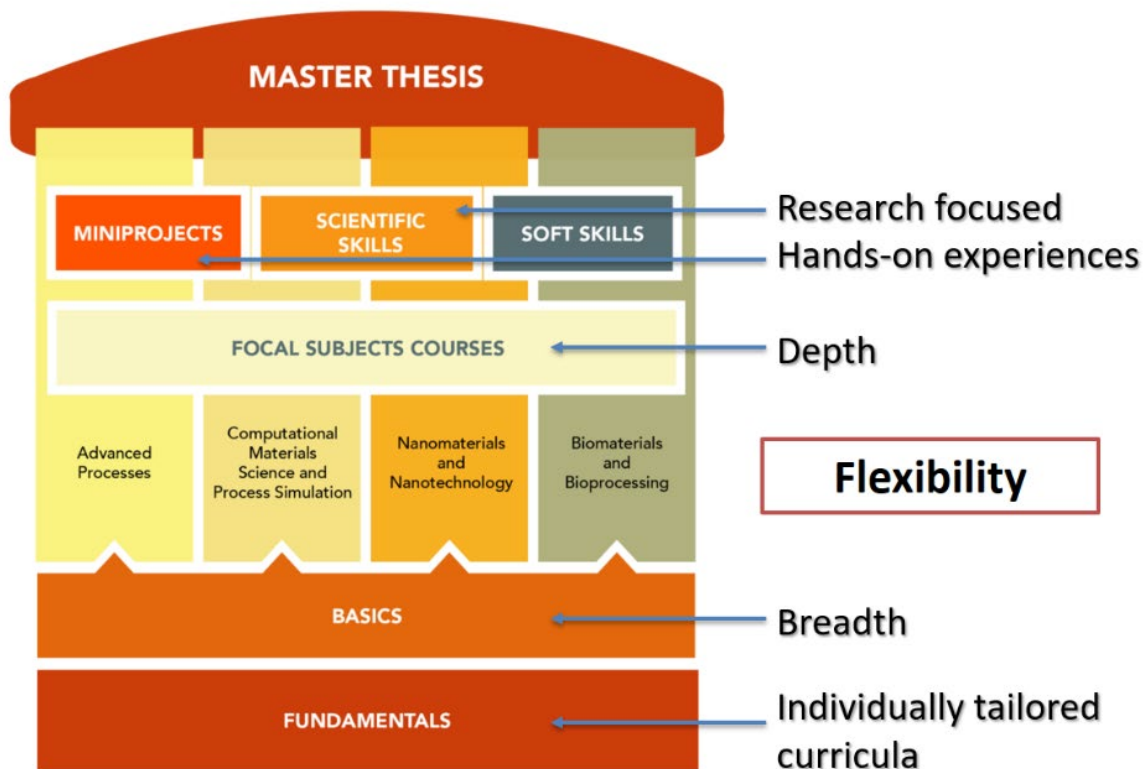
The course is offered by Dr. Paolo Moretti, at the Institute of Materials Simulation (WW8), Department of Material Science,

Dr.-Mack-Str. 77 in 90762 Fürth.

Please sign up for the StudOn-course here:

<https://www.studon.fau.de/crs5224153.html>

4. MAP Structure



Outlook and focal subjects

4.1 Fundamentals

- Lecture courses taken to “catch up” in subjects not previously studied
- Each of you has discussed / will discuss your individual timetable with one of the chairs
- Changes in your fundamental subjects are only possible with written agreement of one of the chairs or Focal Subject Heads
- Written examinations (“Studienleistung”); 90 minutes
- Pass/Fail subjects (if graded this is converted to pass/fail)
- Exam dates are scheduled by the lecturer and you have to sign up for the exams on campo

4.2 Basics

- Compulsory interdisciplinary lectures which provide the “basics” of the focal subjects
- Written exam at the end of the 1st semester, comprising the content of Basics I lectures; Basics II lectures will take place in the 2nd semester with a written exam at the end
- Alternative: Combined exam at the end of the 2nd semester

Core MAP Programme

1 st Sem.	Fundamentals in Materials Science and Engineering and/or Chemical and Biological Engineering (20 ECTS)	Lectures Covering the Basics of the Focal Subjects (10 ECTS)	Scientific Skills (2,5 ECTS)
2 nd Sem.	Focal Subjects (10 ECTS)	Lectures Covering the Basics of the Focal Subjects (10 ECTS)	Miniproject (10 ECTS)
3 rd Sem.	Focal Subjects (20 ECTS)	Elective Course from Focal Subjects (5 ECTS)	Scientific Skills (2,5 ECTS)
4 th Sem.	Master's Thesis (30 ECTS)		

Structure of Additional Qualifications

Internship in either research or industry

1 st Sem.		
2 nd Sem.	Elective Course AQ (5 ECTS)	Soft Skills (5 ECTS)
3 rd Sem.	Miniproject 2 (10 ECTS)	Internship (Industry) (10 ECTS)
4 th Sem.		

4.3 Focal Subjects

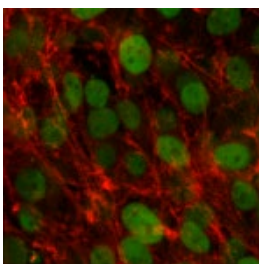
In the course of the first semester, you will be asked to choose two of the four focal subjects. Please note that once a choice has been made, it can only be changed in consultation with one of the MAP chairs and the focal subject head.



Advanced Processes

This focal topic links basic and trendsetting insights into the processing of advanced materials and chemicals with methods and experiences of modern process technology.

Thereby one acquires skills to break new ground in process engineering according to the principle "Innovation by Synergy".



Biomaterials and Bioprocessing

One learns to understand design principles and mechanical optimization strategies of selected biomaterials. In addition one obtains an overview of experimental research methods and possibilities to transfer design principles from nature.

This includes everything from cell cultivating to “Organ Repair” in which, for example, tissue is cultivated within biocompatible matrix structures.



Computational Materials Science and Process Simulation

Those who specialize in this focal subject will acquire the theoretical and practical knowledge required to successfully model and simulate materials and processes from the atomic scale up to individual components or devices. Numerical methods are first sketched in regular lectures and then used in computer labs to solve practical problems. The students learn to work with state-of-the-art simulation packages, including computational fluid dynamics, finite-element and atomistic simulation codes.



Nanomaterials and Nanotechnology

Based on the fundamentals in nanoscale material production, this focal subject covers the whole process chain of nanodisperse system processing.

Special focus is on the challenge to build a bridge from atomic, molecular interactions to large-scale technical realization.

Please be aware, that attending the Pre-course "Biology for Engineers" is necessary for students, who plan to take "Biomaterials and Bioprocessing" as a focal subject.

As a rule, all MAP Focal Subjects examinations are module examinations, i.e. the contents of several courses of a semester are assessed together in one examination. However, for organizational reasons it is sometimes not possible in terms of time to organize a joint examination, in which case there are exceptionally two individual examinations.

Nevertheless, you will receive an overall grade for the entire module. The examiners do not award an individual mark for their part of the examination, but jointly determine an overall module mark.

If one part of the examination is passed and the other is failed, but you still achieve a good overall grade (4.0 or better), the module examination is considered passed and you cannot repeat the failed part.

4.4 Elective Course (Focal Subjects)

Here you can select another module from the Focal Subjects, which can be chosen freely and does not have to come from the previously defined Focal Subjects.

4.5 Mini-Project

The miniprojects should be carried out in one of the institutes of the Chemical and Biological Engineering or Materials Science and Engineering Departments or one of the participating institutes in Bayreuth or Würzburg. In exceptional cases miniprojects can be carried out in other institutes. The suggested project should be concise, have a realistic goal that takes into account the short timescale and enables a certain degree of independent work from the student. The supervisor needs to sign the registration form as well as the grading sheet. The

work includes a review of current literature on the chosen topic, the planning and execution of experiments and simulations to expand existing knowledge and the critical interpretation and discussion of the results of the study in a (graded) written project report (10 ECTS; workload of around 250-300 hours). No "splitting" of the miniproject is foreseen.

The grade will be based on your carrying out of the project and on the report.

A miniproject cannot be combined with a job as a student assistant ("Hiwi").

Deadline for students to submit the miniproject report: at the latest 6 months after the starting date.

If the student chooses to gain additional qualifications in research or industry, an additional miniproject of 10 ECTS is taken during the 3rd semester.

For more information and to download the necessary templates, please visit our Wiki in [StudOn](#)

De-registration or prolongation of deadline:

In line with the stipulations set by the Central Examinations Office, a prolongation is only possible under very specific circumstances and with the required proof documents (e.g. doctor's certificate). A withdrawal is not permitted after topic allocation.

Failure/ late hand in:

Keep in mind MAP failure rules! It is your responsibility to find a new miniproject with a new supervisor during the next semester.

4.6 Scientific Skills

4.6.1 Scientific Skills I: Labcourse

Students have to attend the lab course selected in their curriculum discussion with the MAP chairs. Lab courses are typically supervised by doctoral students in their research time – please be prepared and on time to your session. If you have a lecture straight afterwards – courteously point this out to your supervisor.

- Students must follow the rules stated by the course supervisors regarding preparation, carrying out and writing up of the lab courses
- Lab reports must be handed in to the supervisor in time
- Pass/Fail, not graded

4.6.2 Scientific Skills II: Literature Review

The literature review is written on the latest developments in a specific area related to one or more of the MAP focus topics. In consultation with a MAP instructor, each student will write a scholarly article (~2000 words) reviewing a specific topic by discussing the available primary literature on that topic. The topic can be related to the topic of your mini-project,

but should not be the same. Finally, the topic will be presented as a poster during our poster presentation.

- Graded
- **Deregistration is not allowed for the Literature Review after topic allocation!**

4.7 Additional Qualifications

Your MAP program has two parts:

1. The primary course of 120 ECTS (mandatory for all students).
2. The additional qualifications with research focus (with additional research qualifications) or with industry focus (with additional qualifications for business and industry) - optional for all students. We recommend participation in the complete set totaling 30 ECTS points.

Further details on the structure and the content of the additional qualification modules can be found on our [StudOn wiki](#) and in the module handbook.

You can download a process and grading sheet ("Laufzettel") in StudOn, which will be used to register and document the additional qualifications: [download section](#). The additional qualifications consist of the following modules:

1. Elective Course 5 ECTS
2. 2nd Miniproject (max. 6 months to work on) 10 ECTS
3. Soft Skills 5 ECTS
4. Internship 10 ECTS

After completion of all modules of the additional qualifications, you need to hand in your process and grading sheet at the MAP office. The MAP office team will validate all modules and submit the information to the Records Office. The deadline to submit the completed process and grading sheet of the additional qualifications at the MAP office is the date of submission of your Master Thesis.

Please note that the internship is not allowed to be completed during the lecture period in the 1st to 3rd semester!

4.8 Master's thesis

- The Master's thesis can only be started after completion of all previous modules, including the miniproject, scientific and soft skills seminars
- It consists of a research project to be conducted independently by the student and a written thesis summarizing the research and its results (typically 80 - 100 pages)
- The results of the thesis are presented in a short talk
- The Master's thesis can be carried out at any FAU chair of the departments Materials Science and Engineering (WW) or Chemical and Biological Engineering (CBI) at the University of Erlangen, or at any MAP chair in Bayreuth or Würzburg. Please contact the chair of your interest to ask for available topics
- Projects carried out externally (e.g. in industry) are strongly discouraged and require approval of a MAP professor (not normally given except for when there is an

established collaboration between the professor and the industrial host) and the Prüfungsausschuss of the Faculty of Engineering

- Master's projects must be registered at the Prüfungsamt in writing stating the start date, the institute where the project will take place, the topic (working title) and supervisor. The registration must be signed by a professor who is eligible to act as an examiner and who teaches at the Departments of Materials Science and Engineering (WW) or Chemistry and Biological Engineering (CBI) or within the MAP program at the University of Bayreuth or Würzburg
- Duration: 6 months from the registration day. Keep in mind that 6 months is a hard deadline and extension will require a formal request and justified reasons
- The Master's thesis should comprise original and unpublished work (publications can be written based on the completed thesis)
- Typical contents of the thesis: Introduction to the topic, scientific background (relevant theory and recent literature), materials and methods, results and discussion of the results, conclusion, summary and outlook, bibliography. Details of the structure should be discussed with the supervisor before writing the thesis.
- Graded (by the supervising Professor).

You can find more information on this in our [StudOn wiki](#).

5. Also good to know

5.1. Re-registration

Each semester, re-registration is required in order to continue your studies in the following semester; otherwise, you will be exmatriculated. The re-registration for the summer semester is in February and for the winter semester in July.

Semester schedule

Semester	Start	End
Winter semester (WS)	01 October	31 March
Summer semester (SS)	01 April	30 September

Lecture period	Start	End
Winter semester 2024/25	14 October 2024	07 February 2025
Summer semester 2025	23 April 2025	25 July 2025
Winter semester 2025/26	13 October 2025	06 February 2026

Table 1: [Semester dates | FAU Erlangen-Nürnberg](#)

5.2 Leave of absence

If you have an important reason to take a leave of absence from your studies, you may be allowed to take one or two semesters off without penalty towards your semester count. Reasons for a leave of absence might include, for example, studying abroad, illness or injury, pregnancy, or raising children. Your request for a leave of absence is, as a general rule, to be submitted before the start of the lecture period. Further information on this is provided in the University's attachment down below.

Table 2: [Richtlinien-Beurlaubung-Studium Englisch.pdf \(fau.de\)](#)

6. E-study- electronic information on study

6.1 MAP Homepage

You can obtain a variety of information and direct access to the pages of the individual chairs via the [MAP Homepage](#).

6.2 IdM

[IdM](#) stands for identity management and is used for

- Management of user ID
- Overview of all personal user accounts
- FAUCard
- and many other additional sections

6.3 StudOn

FAU-StudiumOnline (StudOn) offers a variety of advisory and support services as well as infrastructures that cover the entire spectrum of virtually supported teaching, including e-exams.

Tuition fees were used to create the possibility of supporting teaching and examinations virtually, thus expanding teaching with virtual offerings, additional materials, and communication and collaboration elements. Initially, two platforms are available for this purpose: a learning platform on which teachers and students can communicate and exchange documents of all kinds. Each student will find their personal desk on the portal, with all current information. In addition, there is an e-examination platform, which can be used to offer various forms of self-testing, practice of performance assessment.

[StudOn](#) is a platform for online learning and course management

- Register for courses
- Access and store handouts, readings lists, etc.
- Forums, chats and Wikis
- Submitting homework and reports

The main [StudOn-MAP page](#) provides information like

- Curriculum: Courses of the MAP Master's Program with the respective lecture notes (responsibility of lecturers)
- Matriculation groups: Course administration, timetable (including for soft skills), general information and information on social events

and additional sections of interest

- Overview of upcoming events with relevance for MAP students (e.g. research presentations, colloquia, career-related events etc.)
- Job, internship and PhD opportunities
- Information on scholarships
- Forms and templates
- Opportunities for different research projects (miniprojects, master thesis etc.)
- Compilation of relevant information for MAP students (student wiki)

Both platforms can be used by students on their own responsibility and self-organized.

6.4 campo

After logging in to the campo website using your FAU user ID and your password...



Source: [Login and start page.pdf \(fau.de\)](#)

...on that very website you will find detailed instructions on the functions of the portal in relation to your studies and in general. The campo portal is available in German and English. You can change language by clicking on the 'default language' button on the top right of each screen and selecting the language you prefer. You can also look at the [guides, videos and FAQs on campo](#), if you need any assistance.

[campo](#) is the virtual counterpart to the Student Records Office and the Examinations Office

- Manage your personal account
- Register for exams
- Get your transcript
- Get your certificate of enrollment
- Official documents and forms
- Registration of / deregistration from exams

Important:

- Deregistration is not allowed for miniprojects and literature reviews after topic allocation!
- Registration is needed for exams and soft skills courses but not for the participation in the lectures
- Registration periods (1/semester) are to be met
- Registration period differs from lecture period!

6.5 Literature research and e-books

Some of the textbooks that are listed as literature in the module descriptions for the basic lectures, and further books can be downloaded as e-books via computers in the network of the University of Erlangen-Nuremberg and read them.

You can find more information about the e-books of the university library here: [E-books – University Library of Erlangen-Nürnberg \(fau.de\)](#).

7. Useful information for first-year students

7.1 Library

7.1.1 Technical and scientific branch library

Address: Erwin-Rommel-Str. 60, 91058 Erlangen, Germany

Phone: +49 9131 85-27468 (Lending), -27600 (Information)

E-mail: ub-tnzb-info@fau.de

Opening hours:

- **Lending**

Semester and lecture-free period

Monday – Friday 08.00 a.m. – 12.00 a.m.

Saturday, Sunday 10.00 a.m. – 12.00 a.m.

- **Library cards**

Phone: +49 9131 85-27468;

E-Mail: ub-tnzb-info@fau.de

Semester and lecture-free period

Monday - Friday 08.00 a.m. – 07.00 p.m.

Saturday 10.00 a.m. – 02.00 p.m.

- **Reading rooms, textbook collection, catalogs, databases, Internet, computer workroom, study rooms**

Phone: +49 9131 85-27600;

E-Mail: ub-tnzb-info@fau.de

Semester and lecture-free period

Monday - Friday 8.00 a.m. – 12.00 a.m.

Saturday, Sunday 10.00 a.m. – 12.00 a.m.

- **Information**

Semester and lecture-free period

Monday - Thursday 08.30 a.m. - 05.00 p.m.

Friday 08.30 a.m. – 04.00 p.m.

7.2 Print Center

The RRZE offers printing and scanning services to FAU employees and students. In this regard, the print center located at the IT Support Center South (IZS) in Erlangen's South Campus complements the self-service printing and scanning services:

- Smaller documents can be scanned and also printed in some CIP pools or at some locations on multifunction devices (copiers) set up by FAU.
→ [Options for scanning and copying at FAU](#)
- Additionally, there are many locations with print stations where mobile devices can be used to print using FAU's WLAN.
→ [Listing of printing stations](#)
- The DIN-A3-SW and color laser printers of the RRZE can be reached via a PC at the Central Service Desk (room 1.013) at the RRZE.
→ [Central Service Counter at the RRZE](#)

Large format prints (posters), premium color prints (color laser) in higher print runs and large format scans (A0 scanner) are produced by the RRZE print center on order

Contact

PRINT CENTER - Customer Service

Room: 1.013 / 1.043

Martensstraße 1

91058 Erlangen

Phone: +49913185-27001

E-Mail: rrze-poster@fau.de

Website: <https://www.poster.rrze.fau.de>

Office hours

Monday to Thursday: 09.00 a.m. – 04.00 p.m.

Friday: 09.00 a.m. – 02.00 p.m.

More information on this can be found here: [Druckzentrum - Regionales Rechenzentrum Erlangen \(RRZE\) \(fau.de\)](#)

7.3 Available study rooms for group works, projects, etc.

Are you looking for a learning space where you can study in silence after 6:00 p.m. in downtown Erlangen?

The University Library supports you in your search with the database of all library locations, the so-called "Learning Room Navigator". In a [form](#) you can enter your requirements for a learning space. [Lernplatz gesucht? – Universitätsbibliothek \(fau.de\)](#)

7.4 Scholarships

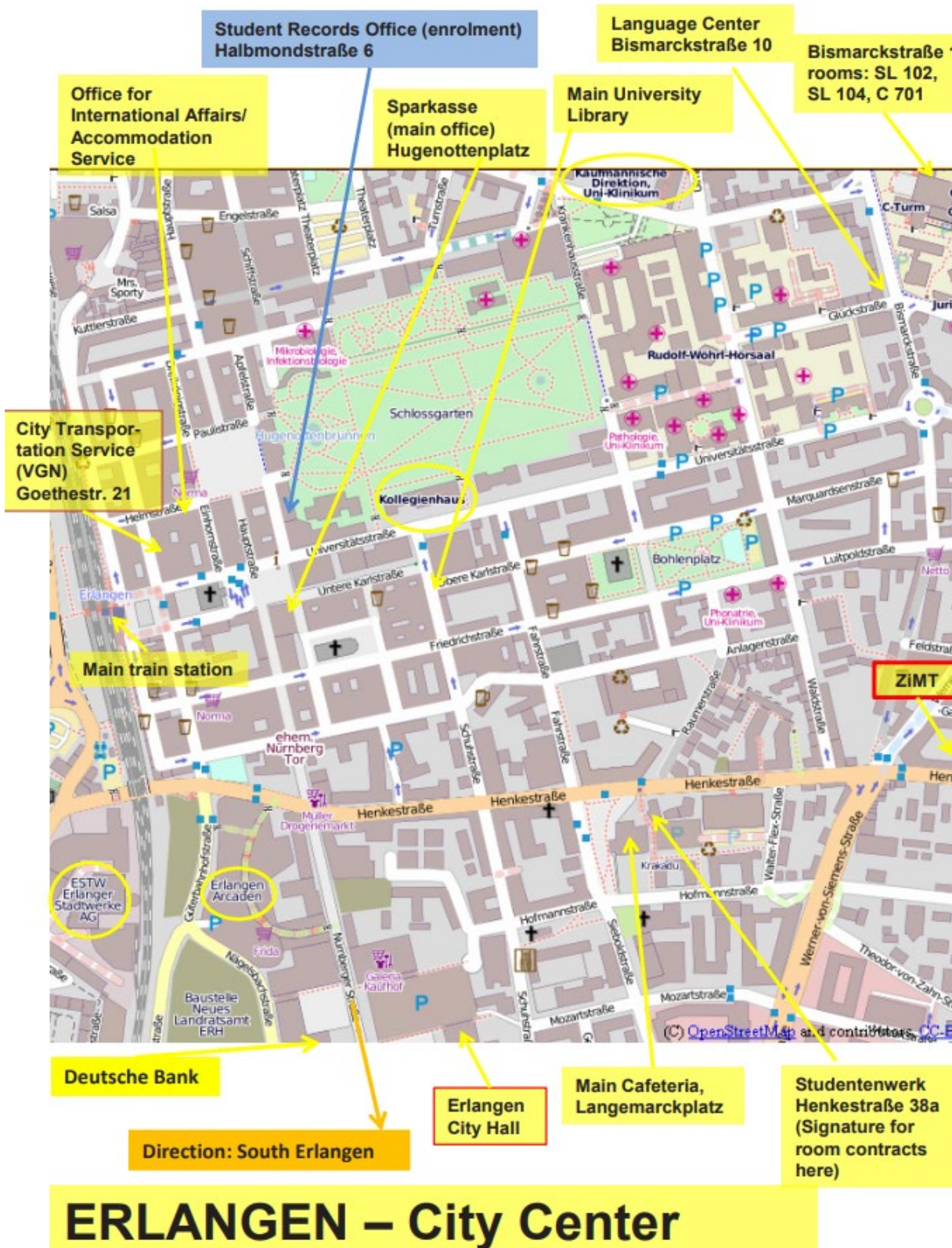
In addition to general fixed expenses such as living costs or study materials, foreign students have to face costs for travel, fees for visa applications and translations and so on. There are various websites which give information for prospective students regarding the cost of studying in Germany. E.g. the [German Academic Exchange Service \(DAAD\)](#) or the website [Studying in Germany](#) give a good overview.

To be able to bear these costs, there are some scholarships that might help. You can find possible scholarships on the [MAP website](#) or on the [list in StudOn](#).

Please, bear in mind that there is strong competition for all scholarships. Financial support can also be offered through FAU (<https://www.fau.eu/education/student-life/financing-your-studies/fau-germany-scholarship/>) or through DAAD (<https://www.daad.de/en/study-and-research-in-germany/scholarships/>) or other organizations. Please make sure to organize the funding for your stay in Germany well before your arrival.

8. Locations

8.1 Maps – important institutions





Source: [First-steps-WiSe23-24-FAU-TF.pdf](#)

8.2 Who to turn to for specific advice?

- **Lecturers:** questions related to respective lecture and examinations
- **Focal subject heads:** overarching questions on focal subject area and career-related advice
Office hours: check individual office hours!
- **MAP Office:** all questions regarding regulations, procedures and administrative aspects; soft skills program; educational grants
Office hours:
 - Tuesday 10.00 am– 12.00 pm
 - Wednesday 10.00 am– 12.00 pm
 - Thursday 10.00 am– 12.00 pm
 - upon appointment
- **Chairs:** any issue that cannot be dealt with on other levels; suggestions for program improvement; feedback
Office hours:
 - Prof. Vogel & Prof. Felfer: upon appointment
- **[StudOn wiki](#):** You can find a large overview of who you should contact with which problem there
 - ➔ Questions about your studies
 - ➔ Advice on health/psychological problems
 - ➔ Student legal advice
 - ➔ Family support
 - ➔ Study abroad
 - ➔ IT Support
 - ➔ Job Search application
- **[Student Records Office and Student Advice and Career Service \(IBZ\)](#):** anything related to your studies
- **[Student Service Centre at the Faculty of Engineering](#)** : Mrs. Mohr organizes e. g. introduction and information on first steps for international students coming to FAU; individual advice around issues pertaining to foreign matters
- **[Central Office for International Affairs \(RIA\)](#):** is the University's main contact point for all questions regarding international studying, teaching and mobility
- **[Advice for international FAU students in non-academic matters](#)**
- **[Regional Data Center Erlangen \(RRZE\)](#):** IT Support
- **[FAU Examinations Office:](#)**
Responsible for:
 - Examination matters Bachelor/Master
 - Recognition of studies and examinations when changing study programs

FAU Examination Office
Faculty of Engineering
Halbmondstr. 6
91054 Erlangen

Contact person for MAP students: Kerstin Fischer-Willmanns, VA
Examinations Office

Halbmondstraße6
91054 Erlangen
Phone: +49 (0) 9131/ 85-24846
Email: kerstin.fischer-willmanns@fau.de

- × Do not rely on your (older) peers for critical information – their information might be outdated or specific to special cases
- ➔ Critical information should be communicated in writing

- [Psychological Counseling Service](#): for advice and psychological support, culture shock
- Students of the Faculty of Engineering are provided with on- site psychological services at the [Counseling and Psychological Center for the Faculty of Engineering](#)
Contact: elizabeth.provan-klotz@werkswelt.de
- [Career Service](#): advice for your professional life
- [Online student A-Z](#): words you need to know for life at FAU
- [The FAU Family Service](#) supports in all questions related to work-family balance
 - ➔ In case of a pregnancy, contact the MAP Office for questions and referral to the responsible University institutions! If pregnant, you should get acquainted with relevant risk assessments (“Anlasslose Gefährdungsbeurteilung von Studiengängen im Rahmen des neuen Mutterschutzgesetzes“),

Find further information on [FAU Website](#).

8.3 Other useful addresses

- **Unit L5 Student Administration:**
Halbmondstraße 6-8, first floor, room 0.034, 91054 Erlangen
Phone: +49 (0) 9131/85-24042
E-Mail: studentenkanzlei@fau.de
Homepage: [Studierendenverwaltung | Friedrich-Alexander-Universität Erlangen-Nürnberg \(fau.de\)](#)
Office hours: Mon - Fri 09.00 a.m. - 12.00 p.m.
- **Unit L2 international affairs:**
Schlossplatz 3, room 1.026, 91054 Erlangen
Phone: +49 (0)9131 85-24800
Homepage: [International | Friedrich-Alexander-Universität Erlangen-Nürnberg \(fau.de\)](#)
- **Representative for disabled students:**
[Studieren mit Behinderung oder chronischer Erkrankung | Friedrich-Alexander-Universität Erlangen-Nürnberg \(fau.de\)](#)
Contact person for students in the central university administration (ZUV) Contact person for students in the central university administration:
Dr. rer. nat. Jürgen Gündel, VA: Halbmondstraße 6, room 1.032, 91054 Erlangen
Phone: +49 (0)9131 85- 24051
E-Mail: juergen.guendel@fau.de

8.4 Leisure and Living

- **University sports:** There is a wide range of courses to choose from as part of the university's General University Sports program. The sports center is located near the south campus (Gebbertstraße 123b, 91058 Erlangen).
Homepage: [University Sports › Allgemeiner Hochschulsport der FAU](#)
- **Student Union:**
Langemarckplatz 4, 91054 Erlangen
Phone: +49 (0) 9131/ 80 02 - 0
Homepage: [Aktuell » Studierendenwerk Erlangen-Nürnberg \(werkswelt.de\)](#)
responsible for:
 - Dormitories
 - Bafög application
 - Childcare facilities
 - Cafeteria
 - Psychological-psychotherapeutic counseling
 - Legal counseling
 - Issuance of the International Student Identity Card (ISIC)
- **Student groups:** The University thrives on the ideas and dedication of its members. Students have several opportunities to get involved in...
 - ...university policymaking,
 - ...teaching,
 - ...providing advice and support to fellow students,
 - ...music, sports and culture,
 - ...Student initiativesand play an active role in shaping university life.
Homepage: [Students getting involved | FAU Erlangen-Nürnberg](#)
- **Buddy Program:** As a guidance for the new MAP students to find their way around, we have launched the Buddy-program. Each new student is assigned a buddy from a higher semester to ask questions.
- **FAU Card:** When you start your studies, you will be given your FAUcard which functions as your student ID card and library card and can be used to make cashless payments at cafeterias and restaurants, pay for copying and access certain buildings.
Here you can find out all you need to know about the FAUcard. The FAUcard Service Office is happy to help if you have any questions: [FAUcard for students | FAU Erlangen-Nürnberg](#)
- **Student assistant jobs:** There are almost always many student assistant positions posted on the FAU website that you can apply to: [Studentische Hilfskräfte - FAU Jobs](#)

8.5 The 29-euro ticket

As part of the introduction of the Deutschlandticket or education ticket for students and trainees (29 euros per month), the semester ticket no longer exists since the winter semester 2023/24. The semester fee to be paid for re-registration for the winter semester 2024/25 will thus be reduced to the Studierendenwerk fee of 67 euros.

What is the 29€ ticket?

- A Germany ticket discounted by €20 for all trainees, volunteers and students in Bavaria.
- The 29€ ticket can be purchased as a monthly cancelable subscription at the local transport association (VGN in our case). The verification will probably take place with the student ID.
- The 29€-Ticket is a success of our and your work of the last year, as we have successfully put pressure on the politicians through surveys, collection of signatures, press work and numerous talks together with the Munich students.

Where can I get the 29€ ticket?

- As in the summer semester, the ticket will be offered in the apps "VGN Fahrplan & Tickets" and "Nürnberg Mobil". We are campaigning for the ticket to be offered as a chip card as well. If you need further support, please send an email to hauptorga@semesterticket.org.

More information on this can be seen here: <https://semesterticket.org/29euroticket/> & <https://www.fau.de/education/studentisches-leben/semesterticket/>

9. Attachments

9.1 Examination regulations

For the topicality of the indicated links, no guarantee is taken over. The valid versions are available for inspection at the responsible offices (Examinations Office, Internship Office). Please additionally note the possibly valid transitional regulations. The latest version can be found on our website soon.

- **Registration for examinations:**

For the winter semester, the registration for examinations can be done in the end of November for approximately 3 weeks. Exact dates will follow in due time.

Registration for the examinations takes place via "campo". The registration function is only activated during the registration period.

Here you can watch a video tutorial on how to register for examinations on campo:
[campo-Tutorial: Studierende \(fau.tv\)](#)

- **Withdrawal regulation:**

Withdrawal from first attempts at written and oral examinations shall be permitted without stating reasons up until the end of the third working day before the examination date; withdrawals are to be submitted to the examiner. The days between and including Monday and Friday shall be considered as working days.

Once a student has declared that they wish to withdraw they may not revoke this declaration; registration to the examination on this date shall be canceled once the declaration is submitted and the student shall no longer be entitled to take the examination. Students shall only be able to register for and sit the examination in a later semester.

An examination shall be graded as 'nicht ausreichend' (unsatisfactory; 5.0) if the student fails to attend an examination on the examination date without good reasons or if the student withdraws from the examination after the withdrawal deadline.

The reasons for withdrawal or absence shall be explained in writing and shown credibly to the Examinations Committee without delay. If the Examinations Committee accepts the reasons, a new date shall be set. In cases where the student is unable to sit an examination due to illness, a certificate from an official medical examiner (vertrauensärztliches Attest) may be required by the Examinations Committee. In case of withdrawal from an examination due to illness after the examination has started, the student must submit a certificate from an official medical examiner to the Examinations Committee without delay.

For further Information, check these two links: [Taking examinations, withdrawal, illness and adjustments to examination arrangements | FAU Erlangen-Nürnberg & ABMPO-TechFak 20070918 idF 20220726 en.pdf \(fau.de\)](#)

- **Failure regulation:**

An examination has been passed if it has received at least the grade 'ausreichend' (sufficient). Ungraded examinations shall either count as 'bestanden' (pass) or 'nicht bestanden' (fail). Except when otherwise stipulated in the relevant degree program and examination regulations, a module examination shall have been passed when all parts of the examination or partial achievements have been passed.

If fraudulent methods were used during the examination and if this only becomes known after the certificate has been awarded, the Examinations Committee may correct the grade retrospectively and declare the examination as having been failed in part or in full.

Voluntarily resitting a passed examination of the same module shall not be permitted.

Source: [ABMPO-TechFak 20070918 idF 20220726 en.pdf \(fau.de\)](#)

Source: [Examinations Office – Faculty of Engineering | FAU Erlangen-Nürnberg](#)

9.2 WiFi and VPN

All FAU locations have WiFi to enable users to access the Internet from mobile devices. RRZE provides IT services at FAU and is responsible for any questions about Internet access. FAU's WiFi may only be used by members of the University (students and staff). It provides users with access to the university network.

If you wish to research literature from outside the University, you must access the university network via the VPN provided by Regional Computer Centre Erlangen (RRZE). The VPN enables a computer with Internet access from any provider to connect to the university's network. RRZE recommends using the Cisco AnyConnect VPN client. A pre-configured profile for the VPN client for iPhone and macOS is available.

More information can be found here: [Computers, Internet & WiFi – University Library of Erlangen-Nürnberg \(fau.de\)](#) & [WLAN › RRZE Anleitungen \(fau.de\)](#)

9.3 ZUV regulations

9.3.1 Master students who cannot prove their requirements within the one-year period

- Master's students who are unable to provide proof of their prerequisite modules (proof of Bachelor's degree, proof of certain requirement modules): within the one-year period and are therefore exmatriculated:

Even students already enrolled at FAU can only transfer to another master's program if they have applied for the corresponding master's program via campo in due time and have received an official notice of admission issued by the master's office.

- Re-enrollment of Master's students who were unable to provide proof of their Bachelor's degree certificate within the one-year deadline and were therefore exmatriculated:

According to information from our legal department, re-enrollment in Master's programs is only possible after a new application has been submitted within the deadline and the student has been re-admitted. This also applies to Master's students who were exmatriculated because they were unable to submit their Bachelor's degree certificate within the one-year deadline in the Master's program. Previously, these students could re-enroll in the previous master's program after completing their bachelor's degree without having to reapply via a subject change application. This is now no longer possible.

9.3.2 International students who need a letter from the university about proper studies / expected end of studies to extend their residence permit

You can download a "Bescheinigung zur Vorlage bei der Ausländerbehörde/confirmation for submission to immigration authorities" for students at: My studies - Study achievements - or My studies - My study achievements.